

Sea bass (*Dicentrarchus labrax*) in divisions 8.a–b (northern and central Bay of Biscay)

ICES advice on fishing opportunities

ICES advises that when the EU multiannual plan (MAP) for Western Waters and adjacent waters is applied, total removals[†] in 2025 that correspond to the F ranges in the plan are between 2 631 tonnes (corresponding to $F_{MSY} \times SSB_{2025} / MSY B_{trigger}$) and 2 241 tonnes (corresponding to $F_{MSY\ lower} \times SSB_{2025} / MSY B_{trigger}$). This applies to the sum of the commercial and recreational catches.

Non-fisheries conservation considerations

ICES has not identified any conservation aspects other than those related to the commercial and recreational fisheries.

Stock development over time

Fishing pressure on the stock is below F_{MSY} , and spawning-stock size is below $MSY B_{trigger}$ and between B_{pa} and B_{lim} .

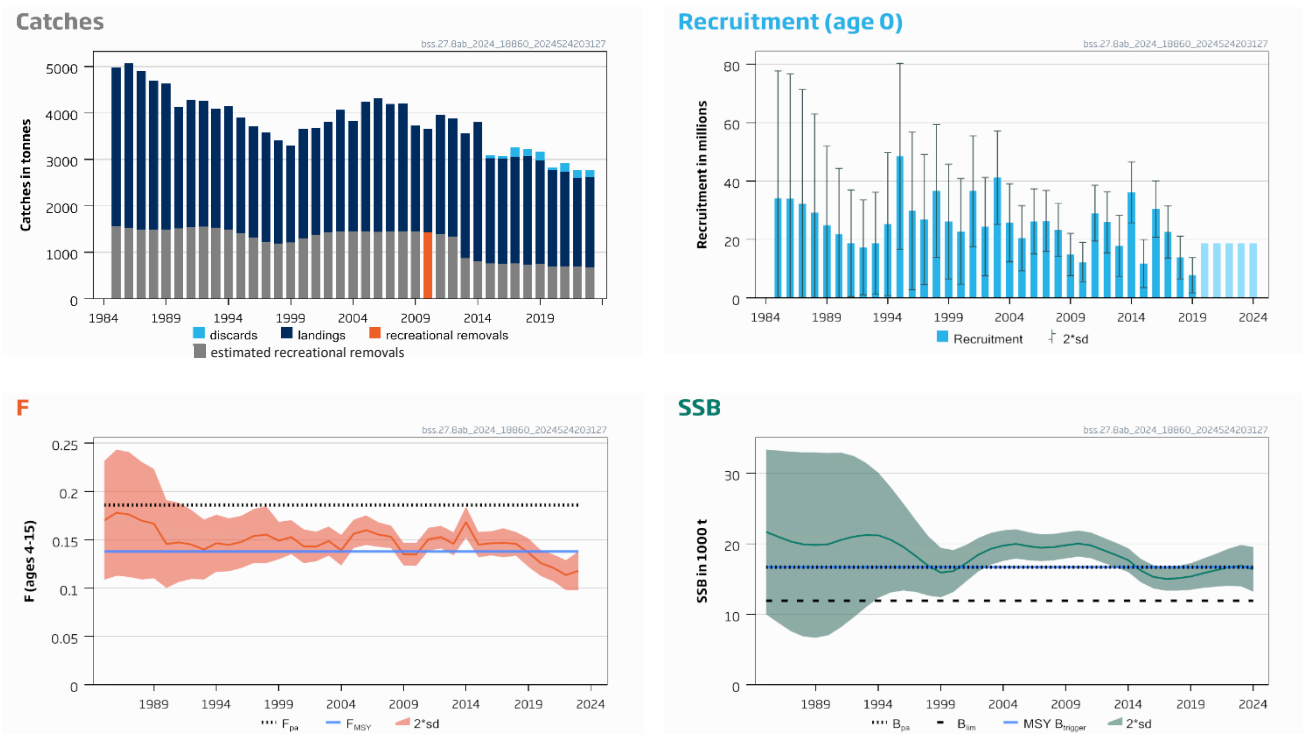


Figure 1 Sea bass in divisions 8.a–b. Summary of the stock assessment. Commercial landings, discards, and recreational removals (observed only in 2010 and estimated for the remaining time-series, shown in grey). The assumed recruitment values for 2020–2024 are shaded in a lighter colour.

[†] Total removals include both commercial and recreational catches, accounting for mortality of released fish (estimated at 5.88% for the commercial fishery discard rate and 5.00% for recreational post-release mortality).

Catch scenarios

Table 1 Sea bass in divisions 8.a–b. Values for the forecast and the interim year.

| Variable | Value | Notes |
|--|-------|--|
| $F_{\text{ages 4–15}}$ (2024) | 0.117 | Total F: average $F_{2021–2023}$ (0.094) for the commercial fishery plus $F_{\text{rec}} = 0.023$ for the recreational fishery (bag limit of 1 fish/day) |
| SSB (2025) | 15426 | Short-term forecast (STF); in tonnes |
| $R_{\text{age 0}}$ (2020–2024) | 18687 | Geometric mean of recruitment (GM, 2008–2019); in thousands |
| Total removals (2024) | 2440 | STF; sum of commercial landings and recreational fishery |
| Projected commercial landings (2024) | 1952 | STF; in tonnes |
| Commercial discard rate (2024) | 5.88 | Average discard rate (2015–2023) relative to commercial landings; in percentage |
| Projected recreational removals (2024) | 489 | STF; in tonnes |

Table 2 Sea bass in divisions 8.a–b. Annual catch scenarios. Weights are in tonnes.

| Basis | Total removals (2025) [#] | Commercial landings* (2025) | Recreational removals* (2025) | Commercial discards (2025) | $F_{\text{ages 4–15}}$ total (2025) | $F_{\text{ages 4–15}}$ commercial landings* (2025) | $F_{\text{ages 4–15}}$ recreational removals* (2025) | SSB (2026) | % SSB change ^{##} | % advice change ^{###} |
|---|------------------------------------|-----------------------------|-------------------------------|----------------------------|-------------------------------------|--|--|------------|----------------------------|--------------------------------|
| ICES advice basis | | | | | | | | | | |
| EU MAP [^] : $F_{\text{MSY}} \times \text{SSB}_{2025} / \text{MSY } B_{\text{trigger}}$ | 2631 | 2041 | 463 | 128 | 0.128 | 0.105 | 0.023 | 14525 | -5.8 | -0.42 |
| F = MAP [^] : $F_{\text{MSY lower}} \times \text{SSB}_{2025} / \text{MSY } B_{\text{trigger}}$ | 2241 | 1669 | 467 | 104 | 0.108 | 0.085 | 0.023 | 14827 | -3.9 | -0.36 |
| Other scenarios | | | | | | | | | | |
| MSY approach : F_{MSY} | 2833 | 2233 | 461 | 140 | 0.138 | 0.115 | 0.023 | 14368 | -6.9 | 7.2 |
| F = 0 | 0 | 0 | 0 | 0 | 0 | 0.000 | 0.000 | 16581 | 7.5 | -100 |
| F = F_{pa} | 3736 | 3093 | 450 | 193 | 0.186 | 0.163 | 0.023 | 13672 | -11.4 | 41 |
| $\text{SSB}_{2026} = B_{\text{lim}}$ | 6029 | 5275 | 424 | 330 | 0.320 | 0.300 | 0.023 | 11920 | -23 | 128 |
| $\text{SSB}_{2026} = B_{\text{pa}}^{\wedge\wedge}$ | | | | | | | | | | |
| $\text{SSB}_{2026} = \text{MSY } B_{\text{trigger}}^{\wedge\wedge}$ | | | | | | | | | | |
| $\text{SSB}_{2026} = \text{SSB}_{2025}$ | 1470 | 936 | 476 | 58 | 0.07 | 0.047 | 0.023 | 15426 | 0 | -44 |
| F = F_{2023} | 2431 | 1847 | 469 | 115 | 0.117 | 0.094 | 0.023 | 14679 | -4.8 | -8.0 |
| Total removals advice (2025) = total removals advice (2024) | 2642 | 2051 | 463 | 128 | 0.128 | 0.105 | 0.023 | 14516 | -5.9 | 0 |

Includes commercial landings, recreational removals, and commercial discards computed assuming an average ratio of 5.88%.

SSB 2026 relative to SSB 2025 (15 389 tonnes)

Advice values for 2025 are relative to the corresponding 2024 values ($F_{MSY} \times SSB_{2024} / MSY B_{trigger} = 2\,642$ tonnes and $F_{MSY\ lower} \times SSB_{2024} / MSY B_{trigger} = 2\,249$ tonnes, respectively; all other values are relative to F_{MSY})

* The split of catch and F into commercial and recreational components in the short-term forecast accounts for the recreational removals' multiplier in 2024, which corresponds to a one-fish bag limit (status quo) as requested by the EU Commission.

^ EU multiannual plan (MAP) (EU, 2019).

^^ The B_{pa} and $MSY B_{trigger}$ options were left blank because none of them can be achieved in 2026, even with zero catch in 2025.

The advice value for 2025 is between 0.37% and 0.42% lower than the advice value for 2024. The catch scenarios were run with a one-fish bag limit for the recreational fishery, assuming the continuation of the 2024 regulation, instead of the two-fish bag limit assumed in last year's advice.

bss.27.8ab

Basis of the advice

Table 3 Sea bass in divisions 8.a–b. The basis of the advice.

| Advice basis | Management plan approach |
|-----------------|---|
| Management plan | The EU multiannual plan (MAP) for stocks in the Western Waters and adjacent areas applies to this stock. The plan specifies conditions for setting fishing opportunities depending on stock status and making use of the F_{MSY} range for the stock. Full details of the plan are described in Regulation 2019/472 (EU, 2019). Full details of the plan are described in Regulation 2019/472 (EU, 2019). |

Quality of the assessment

Recreational removals are based on one year of data only and extrapolated to the rest of the time-series.

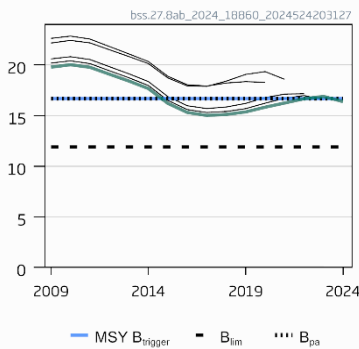
Because of the high uncertainty in recruitment estimates, the last five years of numbers at age 0 are now replaced by its long-term geometric mean from 2008 to 2019 (ICES, 2024). Sea bass enter the fishery at ages 3–4, and there is hardly any information available on recruitment of age 0 fish.

The quality of the assessment may improve when recruitment information from scientific surveys becomes available. Annual surveys have been conducted by France in the Bay of Biscay (Baie de Douarnenez, Loire, and Gironde estuaries) since 2016. Potential inclusion of these surveys in the assessment is under consideration in the ongoing ICES benchmark.

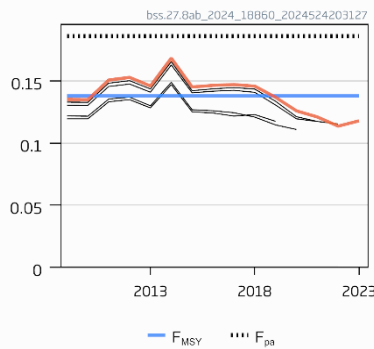
There is evidence (ICES, 2023b) that the northern and southern sea bass are not distinct populations but a meta-population made up of specific subpopulations with connectivity. Potential inclusion of subpopulations in the assessment is under consideration in the ongoing ICES benchmark for this species in the Northeast Atlantic.

This year’s assessment is consistent with last year’s assessment.

SSB (1000 t)



F (ages 4-15)



Rec (age 0; Millions)

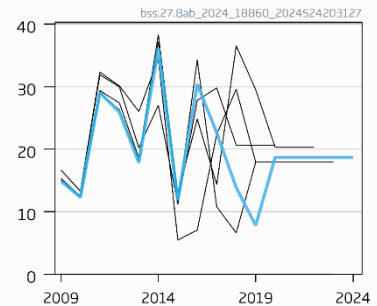


Figure 2 Sea bass in divisions 8.a–b. Historical assessment results (three final-year recruitment assumption included for each line, except the last, which has a five final-year recruitment assumption).

Issues relevant for the advice

There is no TAC for sea bass in this area. The fishery is regulated by technical measures.

On request from the EU Commission, the total removals for 2025 has been divided into commercial and recreational catch based on a continuation of the present regulation (bag limit of one fish per day). The mortality of released fish has been taken into account in the calculation of the catch scenarios.

Reference points

Table 4 Sea bass in divisions 8.a–b. Reference points.

| Framework | Reference point | Value | Technical basis | Source |
|------------------------|-----------------------|-----------|--|-------------------------------|
| MSY approach | MSY $B_{trigger}$ | 16688 | B_{pa} ; in tonnes | ICES (2018a) |
| | F_{MSY} | 0.138 | The F that maximizes median long-term yield in stochastic simulations under constant F exploitation; constrained by the requirement that $F_{MSY} \leq F_{pa}$ | ICES (2018a, 2021) |
| Precautionary approach | B_{lim} | 11920 | $B_{pa}/exp(1.645 \times \sigma)$, $\sigma = 0.2045$; in tonnes | ICES (2018a) |
| | B_{pa} | 16688 | Lowest observed SSB; in tonnes | ICES (2018a) |
| | F_{lim} | Undefined | F_{lim} (0.172) is no longer considered appropriate given the estimate of F_{pa} | ICES (2021) |
| | F_{pa} | 0.186 | F_{P05} with advice rule (AR): the F that provides a 95% probability for SSB to be above B_{lim} | ICES (2021) |
| Management plan | MAP MSY $B_{trigger}$ | 16688 | MSY $B_{trigger}$ | EU (2019) |
| | MAP B_{lim} | 11920 | B_{lim} | EU (2019) |
| | MAP F_{MSY} | 0.138 | F_{MSY} | EU (2019), ICES (2021) |
| | MAP range F_{lower} | 0.117 | Consistent with ranges provided by ICES (2018b), resulting in no more than 5% reduction in long-term yield compared with MSY | ICES (2018a), EU (2019) |
| | MAP range F_{upper} | 0.151 | Consistent with ranges provided by ICES (2018b), resulting in no more than 5% reduction in long-term yield compared with MSY | ICES (2018a, 2021), EU (2019) |

Basis of the assessment

Table 5 Sea bass in divisions 8.a–b. The basis of the assessment.

| | |
|--------------------------|--|
| ICES stock data category | 1 (ICES, 2023a) |
| Assessment type | Age- and length-based analytical assessment (Stock Synthesis) that uses commercial landings and recreational removals in the assessment. Commercial discards are then included to calculate a catch forecast (ICES, 2024). |
| Input data | Commercial landings since 1985, age-at-length and length frequencies from catch sampling; growth and maturity data from sampling of commercial catches and surveys; natural mortality (0.24); recreational removals and length composition for 2010 estimated from a recreational fishery survey; French commercial LPUE series inferred from logbook data |
| Discards and bycatch | Discards are not included in the stock assessment |
| Indicators | None |
| Other information | Last benchmarked in 2018 (ICES, 2018a, 2018b) |
| Working group report | Working Group for the Bay of Biscay and the Iberian Waters Ecoregion (WGBIE) |

History of the advice, catch, and management

Table 6 Sea bass in divisions 8.a–b. History of ICES advice, the agreed TAC, and ICES estimates of commercial landings, commercial discards, and recreational removals. Weights are in tonnes.

| Year | ICES advice | Catch corresponding to advice | Agreed TAC | Official commercial landings | ICES commercial landings | ICES commercial discards | ICES recreational removals |
|------|----------------------------|-------------------------------|------------|------------------------------|--------------------------|--------------------------|----------------------------|
| 2000 | - | - | none | 2147 | 2362 | | |
| 2001 | - | - | none | 2091 | 2306 | | |
| 2002 | No increase in effort or F | - | none | 2113 | 2392 | | |
| 2003 | No increase in effort or F | - | none | 2931 | 2616 | | |
| 2004 | No increase in effort or F | - | none | 2657 | 2380 | | |
| 2005 | - | - | none | 3258 | 2796 | | |
| 2006 | - | - | none | 3487 | 2875 | | |
| 2007 | - | - | none | 3060 | 2751 | | |
| 2008 | - | - | none | 1653 | 2745 | | |

| Year | ICES advice | Catch corresponding to advice | Agreed TAC | Official commercial landings | ICES commercial landings | ICES commercial discards | ICES recreational removals |
|------|--|-------------------------------------|------------|------------------------------|--------------------------|--------------------------|----------------------------|
| 2009 | - | - | none | 2534 | 2278 | | |
| 2010 | - | - | none | 2489 | 2229 | | 1430 [^] |
| 2011 | - | - | none | 2848 | 2575 | | |
| 2012 | No increase in catch | - | none | 2535 | 2549 | | |
| 2013 | 20% reduction in catches (last three-years' average) | < 6000 ^{^^} | none | 2660 | 2685 | | |
| 2014 | 20% reduction in catches (last three-years' average) | < 1890 ^{^^^} | none | 3015 | 2991 | | |
| 2015 | Same advice as last year | < 1890 ^{^^^} | none | 2287 | 2264 | 68 | |
| 2016 | Precautionary approach | < 2634 ^{^^^} | none | 2206 | 2252 | 65 | |
| 2017 | Precautionary approach | < 2634 ^{^^^} | none | 2218 ^{###} | 2295 | 196 | |
| 2018 | Precautionary approach | ≤ 2440 ^{^^^} | none | 2288 | 2338 | 155 | |
| 2019 | MSY approach (commercial + recreational) | ≤ 2495 | none | 2187 ^{###} | 2227 | 183 | |
| 2020 | Management plan | 2533 (range 2417–3075) [#] | none | 2056 | 2090 ^{##} | 41 | |
| 2021 | Management plan | 3108 (range 2966–3770) [#] | none | 1997 | 2032 | 196 | |
| 2022 | Management plan | 3156 (range 2692–3422) [#] | none | 1894 | 1906 | 160 | |
| 2023 | Management plan | 3398 (range 2897–3398) [#] | none | 1936 | 1949 | 148 | |
| 2024 | Management plan | 2642 (range 2249–2642) [#] | none | | | | |
| 2025 | Management plan | 2631 (range 2241–2631) [#] | | | | | |

[^] Recreational removals were only observed in 2010. Estimates derived from the 2010 data for the time-series are shown in Table 9.

^{^^} Prior to 2014, advice was for European sea bass in the Northeast Atlantic. Since 2014, the advice is for divisions 8.a–b.

^{^^^} Catch advice for commercial catches only.

[#] Catches corresponding to F_{MSY} , EU MAP range in brackets (MAP; EU, 2019).

^{##} Data for France re-estimated (ICES, 2024).

^{###} Data were revised in 2024.

History of catch and landings

Table 7 Sea bass in divisions 8.a–b. Catch distribution by fleet, landings, discards, and estimated recreational removals in 2023 as estimated by ICES. Weights are in tonnes.

| Total removals | Commercial landings | | | | | | | Commercial discards | Recreational removals* |
|----------------|---------------------|-----------|------------------|------------------|-----------------|----------------|-----------|---------------------|------------------------|
| | 37% nets | 38% lines | 18% bottom trawl | 2% pelagic trawl | 3% Danish seine | 1% purse-seine | 1% others | | |
| 2773 | | | | | | | | 148 | 676 |
| | 1949 | | | | | | | | |

* Recreational removals are estimates derived from the 2010 observed data.

Table 8 Sea bass in divisions 8.a–b. History of the official commercial landings presented for each country participating in the fishery. History of the total ICES estimated commercial landings. Weights are in tonnes.

| Year | Belgium | France | Netherlands | Spain | UK (England, Wales, N. Ireland, and Scotland) | Total official landings | Total ICES estimated landings |
|-------|---------|--------|-------------|-------|---|-------------------------|-------------------------------|
| 1985 | 0 | 2477 | 0 | 0 | 0 | 2477 | 3420 |
| 1986 | 0 | 2606 | 0 | 0 | 0 | 2606 | 3549 |
| 1987 | 0 | 2474 | 0 | 0 | 5 | 2479 | 3417 |
| 1988 | 0 | 2274 | 0 | 0 | 15 | 2289 | 3217 |
| 1989 | 0 | 2201 | 0 | 0 | 0 | 2201 | 3144 |
| 1990 | 0 | 1678 | 0 | 0 | 0 | 1678 | 2621 |
| 1991 | 0 | 1774 | 0 | 17 | 0 | 1791 | 2734 |
| 1992 | 0 | 1752 | 0 | 14 | 0 | 1766 | 2709 |
| 1993 | 0 | 1595 | 0 | 14 | 0 | 1609 | 2552 |
| 1994 | 0 | 1708 | 0 | 17 | 0 | 1725 | 2668 |
| 1995 | 0 | 1549 | 0 | 0 | 0 | 1549 | 2492 |
| 1996 | 0 | 1459 | 0 | 0 | 0 | 1459 | 2402 |
| 1997 | 0 | 1415 | 0 | 0 | 0 | 1415 | 2358 |
| 1998 | 0 | 1261 | 0 | 27 | 0 | 1288 | 2231 |
| 1999 | 0 | 2081** | 0 | 11 | 0 | 2092** | 2091 |
| 2000 | 0 | 2080 | 0 | 67 | 0 | 2147 | 2362 |
| 2001 | 0 | 2020 | 3 | 68 | 0 | 2091 | 2306 |
| 2002 | 0 | 1937 | 0 | 176 | 0 | 2113 | 2392 |
| 2003 | 0 | 2812 | 0 | 119 | 0 | 2931 | 2616 |
| 2004 | 0 | 2561 | 0 | 96 | 0 | 2657 | 2380 |
| 2005 | 0 | 3184 | 0 | 74 | 0 | 3258 | 2796 |
| 2006 | 0 | 3318 | 0 | 167 | 2 | 3487 | 2875 |
| 2007 | 1 | 2984 | 0 | 74 | 1 | 3060 | 2751 |
| 2008 | 0 | 1508 | 0 | 145 | 0 | 1653 | 2745 |
| 2009 | 1 | 2339 | 0 | 194 | 0 | 2534 | 2278 |
| 2010 | 0 | 2322 | 0 | 165 | 2 | 2489 | 2229 |
| 2011 | 1 | 2536 | 0 | 311 | 0 | 2848 | 2575 |
| 2012 | 1 | 2325 | 0 | 204 | 5 | 2535 | 2549 |
| 2013 | 0 | 2504 | 0 | 156 | 0 | 2660 | 2685 |
| 2014 | 0 | 2926 | 0 | 89 | 0 | 3015 | 2991 |
| 2015 | 0 | 2216 | 0 | 71 | 0 | 2287 | 2264 |
| 2016 | 0 | 2121 | 0 | 85 | 0 | 2206 | 2252 |
| 2017 | 0 | 2146 | 0 | 72** | 0 | 2218** | 2295 |
| 2018 | 0 | 2204 | 0 | 84 | 0 | 2288 | 2338 |
| 2019 | 0 | 2090** | 0 | 97 | 0 | 2187** | 2227 |
| 2020 | 0 | 2032 | 0 | 24 | 0 | 2056 | 2090 |
| 2021 | 0 | 1956 | 0 | 41 | 0 | 1997 | 2032 |
| 2022* | 0 | 1861 | 0 | 33 | 0 | 1894 | 1906 |
| 2023* | 0 | 1910 | 0 | 26 | 0 | 1936 | 1949 |

*Preliminary official landings.

**Data were revised in 2024 (ICES, 2024).

Summary of the assessment

Table 9 Sea bass in divisions 8.a–b. Assessment summary. High and Low refer to two standard deviations (sd) confidence intervals. Weights are in tonnes, recruitment in thousands.

| Year | Recruitment | | | Stock size | | | Fishing pressure | | | Catch | | |
|------|-------------|--------------------|-------|------------|-------|-------|------------------|----------------|-------|---------------------------|------------------------|-------------------------------------|
| | Low | R _{age 0} | High | Low | SSB | High | Low | F ages 4-15 | High | Recreational removals* | Commercial landings | Commercial discards [^] |
| 1985 | 0 | 34145 | 77732 | 10018 | 21703 | 33388 | 0.109 | 0.170 | 0.23 | 1560 | 3420 | |
| 1986 | 0 | 33953 | 76670 | 8782 | 21007 | 33232 | 0.113 | 0.178 | 0.24 | 1520 | 3549 | |
| 1987 | 0 | 32168 | 71376 | 7600 | 20333 | 33065 | 0.112 | 0.176 | 0.24 | 1491 | 3417 | |
| 1988 | 0 | 29160 | 63045 | 6855 | 19922 | 32989 | 0.109 | 0.170 | 0.23 | 1483 | 3217 | |
| 1989 | 0 | 24897 | 52034 | 6684 | 19836 | 32988 | 0.110 | 0.167 | 0.22 | 1491 | 3144 | |
| 1990 | 0 | 21842 | 44352 | 7022 | 19954 | 32886 | 0.100 | 0.146 | 0.191 | 1516 | 2621 | |
| 1991 | 502 | 18752 | 37002 | 8157 | 20551 | 32945 | 0.106 | 0.147 | 0.188 | 1546 | 2734 | |
| 1992 | 1076 | 17318 | 33561 | 9533 | 21011 | 32489 | 0.110 | 0.145 | 0.181 | 1554 | 2709 | |
| 1993 | 1269 | 18722 | 36175 | 10997 | 21256 | 31515 | 0.109 | 0.140 | 0.171 | 1536 | 2552 | |
| 1994 | 827 | 25315 | 49803 | 12339 | 21214 | 30089 | 0.117 | 0.147 | 0.176 | 1486 | 2668 | |
| 1995 | 16626 | 48476 | 80326 | 13099 | 20566 | 28034 | 0.117 | 0.145 | 0.172 | 1408 | 2492 | |
| 1996 | 2797 | 29796 | 56795 | 13383 | 19564 | 25745 | 0.121 | 0.148 | 0.175 | 1316 | 2402 | |
| 1997 | 4575 | 26862 | 49149 | 13167 | 18260 | 23353 | 0.126 | 0.154 | 0.182 | 1228 | 2358 | |
| 1998 | 13888 | 36641 | 59394 | 12652 | 16867 | 21082 | 0.126 | 0.155 | 0.185 | 1182 | 2231 | |
| 1999 | 6503 | 26133 | 45763 | 12415 | 15933 | 19451 | 0.130 | 0.149 | 0.169 | 1214 | 2091 | |
| 2000 | 4716 | 22813 | 40909 | 13154 | 16136 | 19118 | 0.135 | 0.153 | 0.171 | 1296 | 2362 | |
| 2001 | 17585 | 36561 | 55538 | 14629 | 17230 | 19831 | 0.126 | 0.143 | 0.161 | 1370 | 2306 | |
| 2002 | 7620 | 24444 | 41267 | 16074 | 18458 | 20842 | 0.128 | 0.143 | 0.159 | 1423 | 2392 | |
| 2003 | 25208 | 41175 | 57142 | 17036 | 19298 | 21560 | 0.134 | 0.149 | 0.164 | 1451 | 2616 | |
| 2004 | 12365 | 25732 | 39099 | 17580 | 19750 | 21920 | 0.123 | 0.139 | 0.155 | 1456 | 2380 | |
| 2005 | 9281 | 20455 | 31628 | 17901 | 19990 | 22078 | 0.142 | 0.156 | 0.171 | 1450 | 2796 | |
| 2006 | 15116 | 26224 | 37331 | 17670 | 19666 | 21662 | 0.145 | 0.160 | 0.175 | 1441 | 2875 | |
| 2007 | 15978 | 26393 | 36809 | 17539 | 19450 | 21361 | 0.143 | 0.155 | 0.168 | 1447 | 2751 | |
| 2008 | 14262 | 23305 | 32347 | 17656 | 19535 | 21414 | 0.141 | 0.153 | 0.165 | 1457 | 2745 | |
| 2009 | 7659 | 14877 | 22096 | 17926 | 19798 | 21671 | 0.124 | 0.135 | 0.147 | 1452 | 2278 | |
| 2010 | 5578 | 12306 | 19033 | 18180 | 20039 | 21897 | 0.123 | 0.135 | 0.147 | 1430 | 2229 | |
| 2011 | 19486 | 29032 | 38578 | 17953 | 19785 | 21617 | 0.139 | 0.151 | 0.163 | 1392 | 2575 | |
| 2012 | 15452 | 25908 | 36365 | 17307 | 19102 | 20896 | 0.141 | 0.153 | 0.165 | 1342 | 2549 | |
| 2013 | 7324 | 17831 | 28338 | 16683 | 18426 | 20170 | 0.134 | 0.146 | 0.158 | 873 | 2685 | |
| 2014 | 25679 | 36148 | 46616 | 15985 | 17684 | 19383 | 0.152 | 0.168 | 0.185 | 811 | 2991 | |
| 2015 | 3585 | 11788 | 19991 | 14552 | 16220 | 17888 | 0.132 | 0.145 | 0.158 | 765 | 2264 | 68 |

| Year | Recruitment | | | Stock size | | | Fishing pressure | | | Catch | | |
|------|-------------|--------------------|-------|------------|-------|-------|------------------|------------------------|-------|------------------------|---------------------|----------------------|
| | Low | R _{age 0} | High | Low | SSB | High | Low | F _{ages 4-15} | High | Recreational removals* | Commercial landings | Commercial discards^ |
| 2016 | 20821 | 30434 | 40047 | 13668 | 15320 | 16972 | 0.134 | 0.146 | 0.159 | 757 | 2252 | 65 |
| 2017 | 13668 | 22606 | 31543 | 13349 | 15027 | 16705 | 0.132 | 0.147 | 0.162 | 765 | 2295 | 196 |
| 2018 | 6521 | 13851 | 21181 | 13366 | 15122 | 16879 | 0.134 | 0.146 | 0.158 | 735 | 2338 | 155 |
| 2019 | 1761 | 7804 | 13848 | 13485 | 15373 | 17261 | 0.122 | 0.137 | 0.152 | 749 | 2227 | 183 |
| 2020 | | 18687** | | 13753 | 15840 | 17927 | 0.113 | 0.126 | 0.139 | 690 | 2090 | 41 |
| 2021 | | 18687** | | 13916 | 16253 | 18590 | 0.107 | 0.121 | 0.135 | 702 | 2032 | 196 |
| 2022 | | 18687** | | 14042 | 16675 | 19309 | 0.098 | 0.114 | 0.129 | 700 | 1906 | 160 |
| 2023 | | 18687** | | 13968 | 16908 | 19848 | 0.098 | 0.118 | 0.138 | 676 | 1949 | 148 |
| 2024 | | 18687** | | 13213 | 16387 | 19560 | | | | | | |

* Recreational removals are estimates derived from the 2010 observed data.

** Geometric mean 2008–2019.

^ Commercial discards are reported here, but not used in the assessment.

Sources and references

- EU. 2019. Regulation (EU) 2019/472 of the European Parliament and of the Council of 19 March 2019 establishing a multiannual plan for stocks fished in the Western Waters and adjacent waters, and for fisheries exploiting those stocks, amending Regulations (EU) 2016/1139 and (EU) 2018/973, and repealing Council Regulations (EC) No 811/2004, (EC) No 2166/2005, (EC) No 388/2006, (EC) No 509/2007 and (EC) No 1300/2008. Official Journal of the European Union L 83: 1–17. <http://data.europa.eu/eli/reg/2019/472/oj>
- ICES. 2018a. Report of the Inter-benchmark Protocol on Sea Bass (*Dicentrarchus labrax*) in divisions 8.ab (Bay of Biscay North and Central; IBPBass 2018), July–September 2018, by correspondence. ICES CM 2018/ACOM:54. 5 pp. <https://doi.org/10.17895/ices.pub.5345>
- ICES. 2018b. Report of the Benchmark Workshop on Sea bass (WKBASS), 20–24 February 2017 and 21–23 February 2018, Copenhagen, Denmark. ICES CM 2018/ACOM:44. 259 pp. <https://doi.org/10.17895/ices.pub.5344>
- ICES. 2021. Working Group for the Bay of Biscay and the Iberian Waters Ecoregion (WGBIE). ICES Scientific Reports. 3:48. <https://doi.org/10.17895/ices.pub.8212>
- ICES. 2023a. Advice on fishing opportunities. In Report of the ICES Advisory Committee, 2023. ICES Advice 2023, section 1.1.1. <https://doi.org/10.17895/ices.advice.22240624>
- ICES. 2023b. Benchmark on selected sea bass stocks–stock ID workshop (WKBSEABASS-ID). ICES Scientific Reports. 5:52. 31 pp. <https://doi.org/10.17895/ices.pub.22794737>
- ICES. 2024. Working Group for the Bay of Biscay and the Iberian Waters Ecoregion (WGBIE). ICES Scientific Reports. 6:59. In preparation <https://doi.org/10.17895/ices.pub.25908130>

[Download the stock assessment data and figures](#)

Recommended citation: ICES. 2024. Sea bass (*Dicentrarchus labrax*) in divisions 8.a–b (northern and central Bay of Biscay). In Report of the ICES Advisory Committee, 2024. ICES Advice 2024, bss.27.8ab. <https://doi.org/10.17895/ices.advice.25019186>